



Investor Conference

2023Q1



Disclaimer

This document and relevant information may contain certain forward-looking statements that are inherently subject to risks and uncertainties, including but not limited to market risks, supply chain risks, market demand, product competition, other risks and etc. Actual results may differ materially from those contained in the forward-looking statements.

Any business outlook or forward-looking statement hereof reflects the Company's estimates and expectations as of now. We undertake no obligation to update any forward-looking statement.



Revenue & Gross Margin

(NTD: mn)

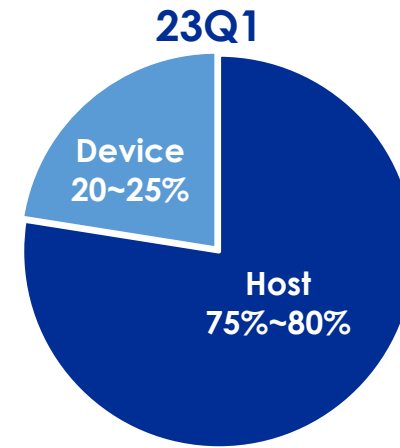




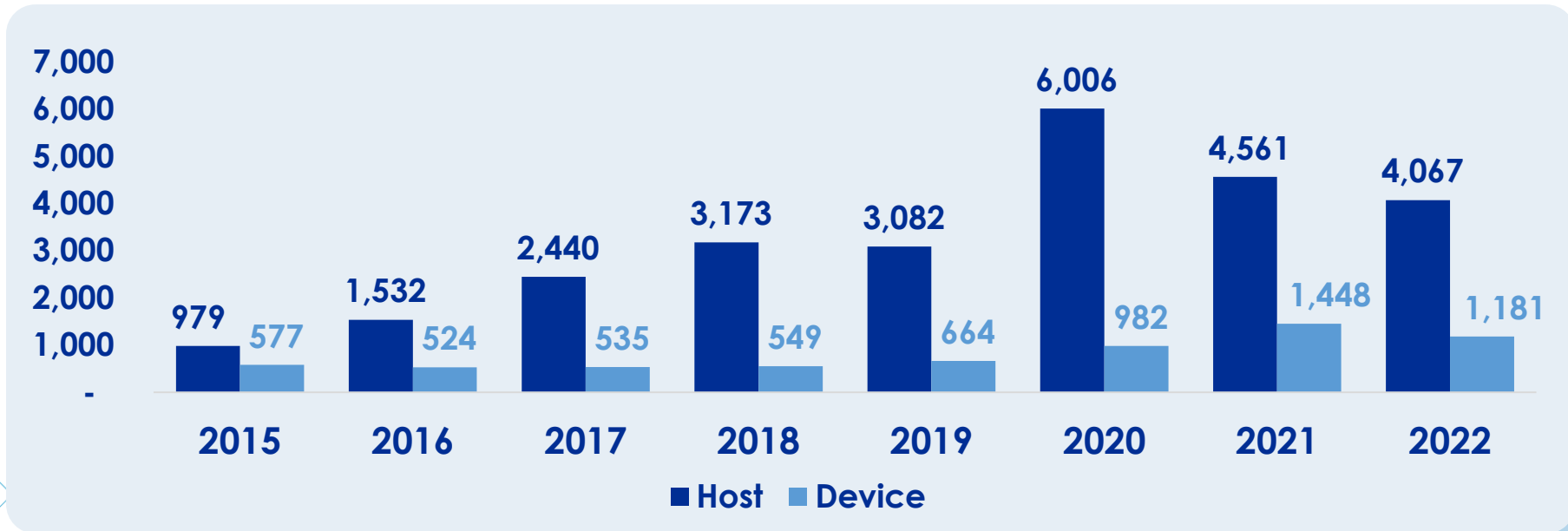
Revenue by Product

(NTD: mn)

%	2018	2019	2020	2021	2022
Host ¹⁾	85%	82%	86%	76%	78%
Device ²⁾	15%	18%	14%	24%	22%



Note: (1) Host: High speed interface controller
 (2) Device: High speed device controller and others

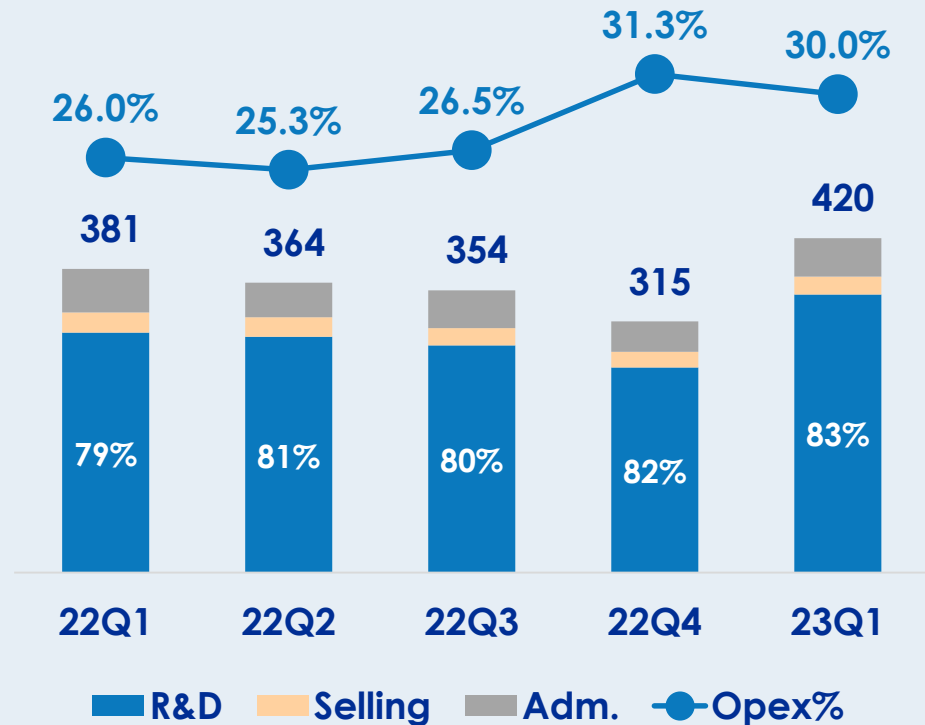




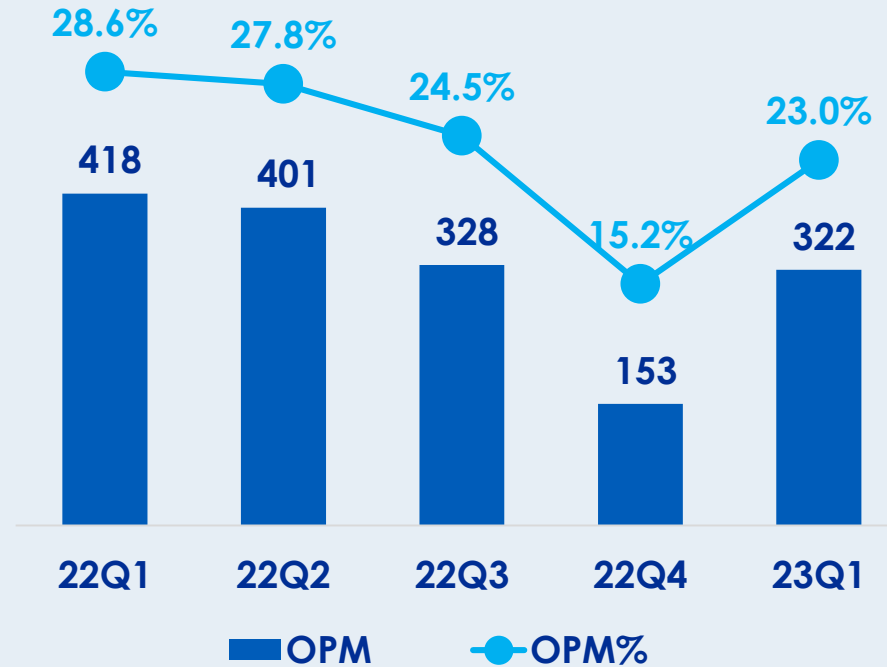
Operating Expense & Operating Margin

(NTD: mn)

Operating Expense

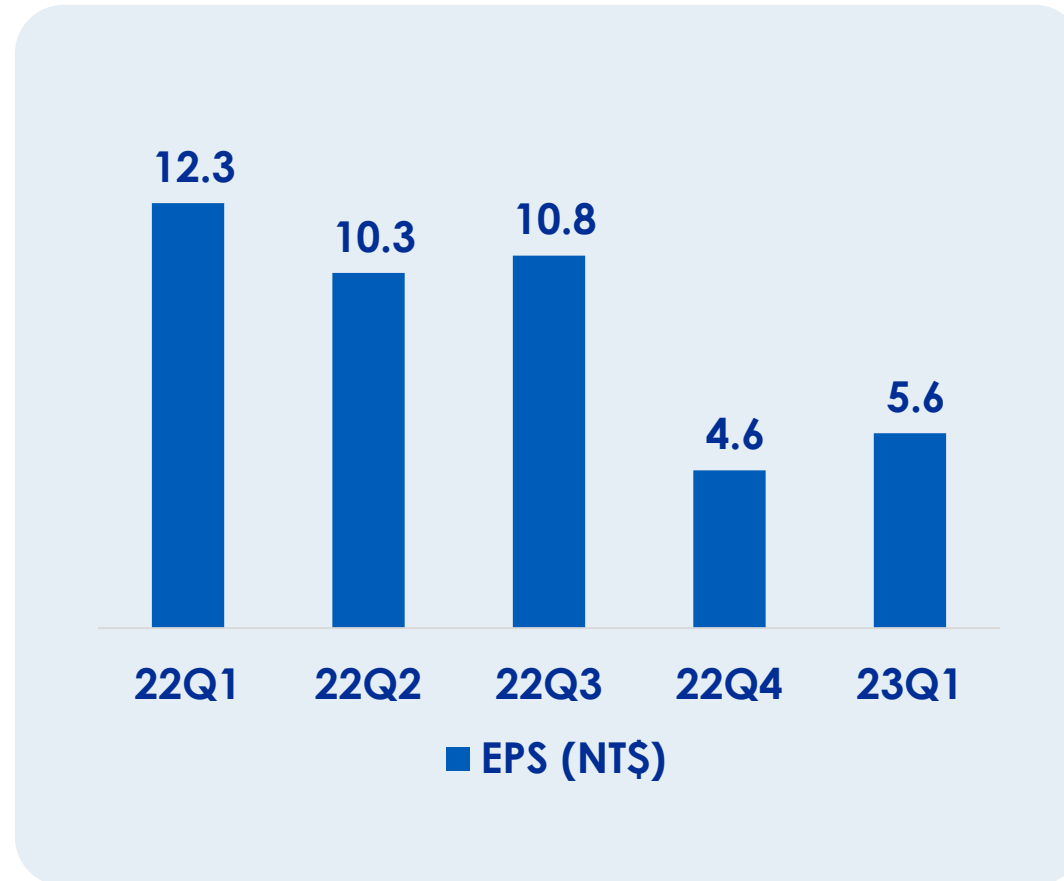


Operating Margin



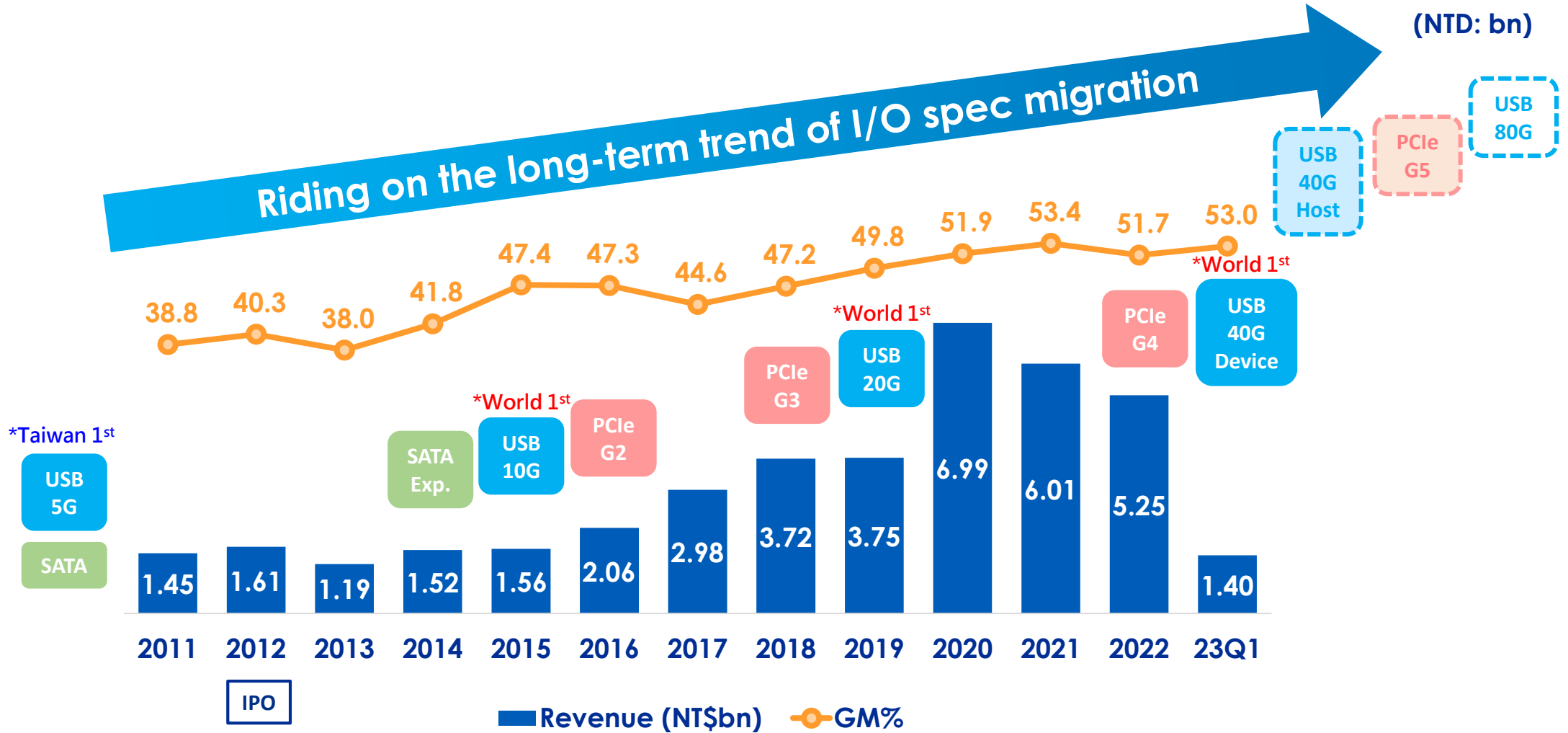


EPS





Driven by Continuous Technology Migration



* Acquired certification from USB-IF



Income Statement

(NTD: \$)

	<u>1Q23</u>		<u>4Q22</u>		<u>1Q22</u>		<u>QoQ</u>	<u>YoY</u>
Net Revenue	1,398,818	100%	1,007,849	100%	1,463,334	100%	39%	-4%
Gross Margin	<u>741,857</u>	53%	<u>468,467</u>	46%	<u>799,328</u>	55%	58%	-7%
Operating expenses	(419,769)	-30%	(315,112)	-31%	(380,995)	-26%	33%	10%
Operating Margin	<u>322,088</u>	23%	<u>153,355</u>	15%	<u>418,333</u>	29%	110%	-23%
Non-operating income and expenses	117,529	8%	180,099	18%	513,303	35%	-35%	-77%
Profit before income tax	<u>439,617</u>	31%	<u>333,454</u>	33%	<u>931,636</u>	64%	32%	-53%
Income tax expense	(50,287)	-4%	(18,156)	-2%	(83,015)	-6%		
Net income	<u>389,330</u>	28%	<u>315,298</u>	31%	<u>848,621</u>	58%	23%	-54%
Earnings per share (NT\$, Basic)	<u>\$ 5.63</u>		<u>\$ 4.56</u>		<u>\$ 12.28</u>			



Balance Sheet Summary

(NTD: \$)

	2020/12/31		2021/12/31		2022/12/31		2023/3/31	
	Amount	%	Amount	%	Amount	%	Amount	%
Cash and Cash Equiv.	2,824,720	18%	2,344,369	13%	2,973,196	17%	2,273,553	13%
Account Receivable	416,206	3%	534,932	3%	835,343	5%	1,163,020	6%
Inventory	1,048,304	7%	1,413,571	8%	1,157,943	7%	903,991	5%
Total Assets	15,690,529	100%	17,934,809	100%	17,794,665	100%	18,084,126	100%
Liability	1,588,952	10%	1,652,191	9%	2,483,263	14%	2,927,946	16%
Shareholders' Equity	14,101,577	90%	16,282,618	91%	15,311,402	86%	15,156,180	84%



asmedia

ASMEDIA TECHNOLOGY INC

Thank You!